

**SHOW·RITE<sup>®</sup>**  
*Show Feeds... Done Rite!*



***RABBIT MANAGEMENT GUIDE***



*Products and Answers that WORK<sup>®</sup>*

# SHOW•RITE® Rabbit Pellets

#6884 (20 lb.) #6885 (40 lb.)

Premium Rabbit Pellets

#680A (15 lb.)

Small Wonders Rabbit Pellets

SHOW•RITE® has two feeds specifically for show rabbits. **Premium Rabbit Pellets** are complete, balanced mini-pellets formulated especially for the large show rabbit. **Small Wonders Rabbit Pellets** is a complete, low protein, low energy feed for the smaller rabbit (see more information on the next page).

Both are designed for optimal muscle growth, superior fur development and excellent breeding performance. Both have been tested and proven in a top rabbitry and are formulated to incorporate the newest ingredient technology available.

## Guaranteed Analysis

	Premium Rabbit Pellets	Small Wonders Rabbit Pellets
Crude Protein, min	17.0%	15.0%
Crude Fat, min	3.0%	3.0%
Crude Fiber, max	18.0%	22.5%
Calcium (Ca)	0.6 - 1.1%	0.6 - 1.1%
Phosphorus (P), min	0.6%	0.6%
Salt (NaCl)	0.4 - 0.9%	0.4 - 0.9%
Vitamin A, min	2,750 IU/lb	2,750 IU/lb

## Features

- Contain high levels of lysine and methionine for excellent growth, muscle tone and quality fur.
- Developed in association with one of the top show rabbitries.
- Contain chelated minerals for better mineral absorption and, thus, improved performance.
- Helps rabbits grow fit not fat.
- Contains Mannan Oligosaccharides to help control “bad bacteria” and allows “good bacteria” to grow.

## Ingredients

Forage products, processed grain by-products, plant protein products, roughage products, grain products, molasses products, sodium calcium aluminosilicate, salt, methionine supplement, monocalcium phosphate, dicalcium phosphate, vegetable fat, amylase, papain, saccaromyces cerevisiae, yucca schidigera extract, Lactobacillus Acidophilus Streptococcus Faecium, zinc methionine complex, manganese methionine complex, copper lysine complex, cobalt glucoheptonate, vitamin A acetate, vitamin D supplement, vitamin E supplement, vitamin B12 supplement, riboflavin supplement, niacin, calcium pantothenate, menadione dimethylpyrimidinol bisulfite (source of vitamin K activity), folic acid, biotin, thiamine mononitrate, pyridoxine hydrochloride, ferrous sulfate, cobalt carbonate, zinc oxide, ethylenediamine dihydriodide, copper sulfate, manganous oxide, calcium iodate, manganese sulfate, zinc sulfate, sodium selenite, propionic acid (a preservative).

## Feeding Directions

Feed SHOW-RITE® Premium Rabbit Pellets as the sole ration to growing and mature large breed show rabbits. Provide fresh, clean water at all times.

Feed SHOW-RITE® Small Wonders Rabbit Pellets as the sole ration to small breed rabbits. May need to limit feed depending upon body condition. Can also be used as a maintenance feed for larger breeds of rabbits. Provide fresh, clean water at all times.



# SHOW•RITE Small Wonders Rabbit 15% Pellets

## Product #680A

A mini-pellet designed specifically for the smaller breeds of rabbits. This product has a lower crude protein but still has high levels of amino acids lysine and methionine. It has optimal levels of vitamins and trace minerals for superior growth of smaller breeds of rabbit. It will also work well to help maintain weight and body condition for non-working other breeds of rabbits.

## Guaranteed Analysis

Crude Protein	.....15.0%
Crude Fat	.....3.0%
Crude Fiber	.....17.5 to 22.5%
Calcium	.....0.6 to 1.1%
Phosphorus	.....0.6%
Salt	.....0.4 to 0.9%
Vitamin A	.....2,750 IU/lb

## Features

- Stimulates top production and performance in small breed rabbit being prepared for show
- Supplies low protein but optimal levels of amino acids
- Amino acids lysine for muscles and methionine for fur quality
- Contains the same superior levels of vitamins and minerals as the SHOW•RITE Premium Rabbit Pellets
- Has the same unique ingredients (chelated minerals, enzymes, etc.) as the SHOW•RITE Premium Rabbit Pellets

## Feeding Directions

Feed as the sole ration to small breed rabbits.



# The Science Behind the Nutrition

*Selected field-proven micro-ingredients have been included in the formulation of SHOW•RITE Premium Rabbit Pellets ... adding to the uniqueness of this quality show feed. Each of these special micro-ingredients was developed through biotechnology and represents a major advancement in animal nutrition.*

## SHOW•RITE PREMIUM RABBIT PELLETS:

---

### Contains Yeast Culture and Probiotics

Yeast culture and probiotics have been shown to improve fermentation conditions in the large intestine and caecum (hind gut) which improves fiber digestion. Rabbits have specific fiber needs that must be balanced with the protein and energy levels for high production.

### Contains Added Enzymes

In the rabbit's intestine, digestion is not always 100 percent efficient and can benefit from outside help, such as enzymes added to the feed. A unique blend of specific digestive enzymes has been added into the feed which gives rabbit digestion an extra boost. This enzyme blend contains ...

- Amylase which enhances starch digestibility, and
- Protease which is an enzyme that increases protein digestion.

One protease enzyme is called papain which has been suggested to help with digesting hair balls which tend to develop in the digestive tract.

All of the enzymes in SHOW•RITE Premium Rabbit Pellets are derived from natural microbial fermentation.

### Contains Organic Trace Minerals

Rabbits need adequate amounts of zinc, copper and manganese for the formation of hair. Iron is an essential element in hemoglobin, the oxygen-carrying component of red blood cells. Rabbits also require these trace minerals for optimum body weight gain, bone growth and reproduction.

Trace minerals occur in two forms: inorganic (such as zinc oxide and copper sulfate) and organic (such as proteinated and chelates). Proteinated trace minerals, which occur in several forms in nature, are bound or bioplexed to protein. This makes them more easily absorbed from the animal's digestive tract compared to inorganic trace minerals. Also, proteinated trace minerals do not interfere with other nutrients, such as vitamins and lipids, like inorganic forms do.



## SHOW•RITE® Premium Rabbit Pellets



### Contains Yucca Extract

Rabbit droppings contain nitrogenous compounds — mainly protein and urea — which break down into ammonia vapor. High concentrations of ammonia in an enclosed room can irritate



the sinuses, eyes and lungs of rabbits. Prolonged exposure causes respiratory problems and stress. Ammonia vapor also adversely affects people working in rabbit houses.

Extract from the *Yucca Schidigera*, a plant grown in the deserts in the United States and Mexico, binds ammonia in rabbit

droppings and prevents it from reaching high concentrations in the air inside the rabbitry. Yucca extract also binds other harmful, offensive-smelling compounds in rabbit droppings, like skatoles and aldehydes.

### Contains Mannan Oligosaccharides

Mannan oligosaccharides (pronounced, MAN nan O le Go sac car rides) are complex sugars extracted from the cell walls of yeast (*Saccharomyces Cerevisiae*). They have been used extensively in weaned calf and pig feeds. Although the extract mechanism is not known, one suggestion for the mode of action is that this sugar somehow prevents the “bad” bacteria in the animal’s digestive tract from growing. This gives the “good” bacteria less competition for food and other needed materials so it can grow optimally.

# Helpful Guidelines

## General Feeding Recommendations

The rabbit is a plant-eating animal that practices coprophagy ... or the process of re-ingesting certain fecal materials. A rabbit deposits two types of droppings ... one is the normal hard or “dry” pellet and the other is a rather soft dropping covered with mucus. This “soft pellet,” or it is sometimes referred to as the “night pellet,” is the one that the rabbit recycles through its digestive tract. Coprophagy, then, enables the rabbit to utilize part of its food intake better. It is believed that this practice supplies the rabbit with certain essential nutrient factors that it would not normally get enough of through its regular diet.

One common misnomer or concept in rabbit feeding is that a rabbit must have hay. Such is not the case if the complete feed being fed contains sufficient roughage or fiber material to keep the animal's intestinal tract healthy. Based on current feeding knowledge, a complete feed which is too high in energy or, rather, too low in fiber content will result in digestive upsets when fed to rabbits. A fiber level of 12 percent is known to be adequate in most diets for rabbits.

## Feeding and Watering Equipment Recommendations

Individual crocks for feed and water may be used just as long as they are heavy enough not to be overturned. Rabbits will also adjust well to hanging feeders or waterers fastened to the side wires of the cage or hutch.

Automatic feeders and watering equipment are usually only justified in the larger commercial feeding operations by reducing the labor costs involved in feeding and watering rabbits.

If crocks or open waterers are used, a floating object, such as a hollow, plastic “wiffle” ball, can be used to keep the rabbit's dewlap from getting wet. Continual wetting of the dewlap can cause irritation and will detract from the appearance of the animal.

All feeding and watering equipment should be cleaned daily to prevent bacteria build-up and disease. Cleaning/sanitizing this equipment is made easy by using a solution of 5 percent chlorine bleach (mixture of one cup of bleach in one gallon of water).

# Helpful Guidelines

## House Recommendations

Rabbit housing can range from outside hutches to total environmentally controlled housing. It should be pointed out, however, that the more consistent the environment, the better the results which are obtained in breeding, hair coat control and livability of young. The best temperature range for rabbits is between 55 and 65° F with a humidity level about 10 points below the temperature level.

Good ventilation is of prime importance but cross drafts should be avoided. Although rabbits can withstand extremes in temperature and humidity, they will merely survive and usually will not produce or reproduce properly under extreme environmental conditions. Different breeds do have different tolerances for their environment so the type of housing to be used should be considered when selecting a rabbit project.

The amount of ventilation which is available should be a determining factor when considering the number of rabbits to be raised in any particular confined area. The better the amount of ventilation available, the greater number of rabbits which can be supported in any given area.

## Rabbit Hutch or Pen Recommendations

Pen sizes for rabbits should depend upon the size of the animal (breed). A 3½ pound rabbit does not need the same size pen as a 14 pound rabbit. Some conventional sizes for rabbit cages are:

- for small rabbit breeds            24" x 24" x 18" or 30" x 24" x 18"
- for medium rabbit breeds        30" x 30" x 18" or 36" x 30" x 18"
- for large rabbit breeds            40" x 30" x 18" or 48" x 30" x 18"

If pens are built entirely of wire, it is usually wise to place a resting board in one corner of the pen as rabbits have a tendency to develop sore feet if kept on wire only. Also, if pens are placed side by side, the mesh size should be small enough to prevent the rabbits from nipping one another.

Rabbits will gnaw on wood, so hutches constructed entirely of wood will not last as long as wire constructed pens. Cages constructed from wood are also more difficult to keep clean when taking into consideration disease and bacteria prevention.

If pens are tiered, dropping boards between the cages are recommended. The dropping boards should have enough slant to allow droppings to run off toward the rear of the cages. Enough overhang should be allowed in both the front and the rear to completely protect the lower cage.

# Feeding the Doe

## Feeding the Breeding Doe

Feeding the doe for breeding purposes is divided into three categories:

- Open doe (unbred and without litter)
- Gestating doe (pregnant)
- Lactating doe (with litter)

## Feeding the Open Doe

This is the most critical feeding period in the breeding cycle. It is important that does do not become overly fat or too thin. Feed open does SHOW•RITE Premium Rabbit Pellets at the rate of 1/2 ounce of feed for each pound of body weight, in one to two feedings per day.

## Feeding the Gestating Doe

This period is obviously important from the standpoint of the doe producing a large, healthy litter at kindling time. The gestating doe will usually maintain her body condition when fed SHOW•RITE Premium Rabbit Pellets at the rate of 2/3 ounce of feed for each pound of body weight. This amount of ration should be divided and fed in one to two feedings per day. No additional hay or supplements need to be fed. The above amount of ration may be increased or decreased depending upon the doe's body condition.

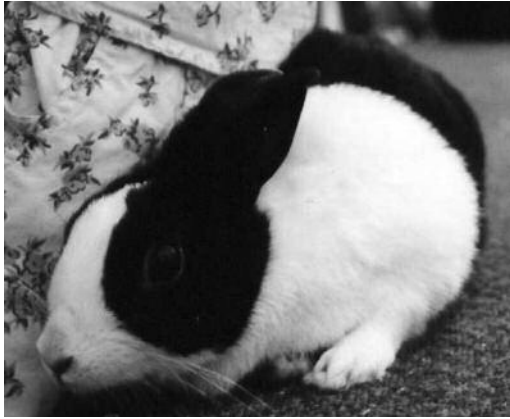


## Feeding the Lactating Doe

The amount of feed needed will depend upon the size of the doe's litter. On the day the doe kindles, she need not be fed. On the day after, start her on four ounces of SHOW•RITE Premium Rabbit Pellets. Increase the amount of feed by one to two ounces per day each day for three days.

A doe nursing six or more bunnies may be fed free choice after five days post-kindling. Does nursing less than six bunnies should be hand fed at the rate of six ounces for the doe and one additional ounce for each bunny being nursed. More or less feed may be needed depending upon the body condition of the doe and her young.

# Feeding the Buck



## Feeding the Mature Buck

Feeding the mature buck being raised for breeding purposes is divided into two categories:

- Non-breeding buck
- Breeding buck

## Feeding the Mature, Non-breeding Buck

It is important to maintain good body condition during this period of the breeding cycle. Bucks should not be allowed to become overly fat or too thin. The amount of feed required will depend upon the buck's requirements to maintain good body condition. In general, feed non-breeding bucks SHOW•RITE Premium Rabbit Pellets at the rate of 1/2 ounce of feed for each pound of body weight in one to two feedings per day.



## Feeding the Breeding Buck

A buck in service will usually maintain its body condition when fed SHOW•RITE Premium

Rabbit Pellets at the rate of 2/3 ounce of feed for each pound of body weight. This amount of ration should be divided and fed in one to two feedings per day. No additional hay or supplement needs to be fed. The amount of feed being fed may vary according to the individual buck's requirements.

# Feeding Young Rabbits and Show Rabbits

## Feeding the Young Rabbits:

### Weaning

Bunnies can be weaned as soon as they are out of the nest box and eating the doe's feed or eating feed from a creep feeder. Weaning time will vary between breeds but can range from four to eight weeks.

### Growing Rabbits

After weaning, young rabbits should be fed the same until they reach maturity, regardless of what their future role in life may be. SHOW•RITE Premium Rabbit Pellets should be fed to the young rabbits on a free choice basis and clean, fresh water should be kept in front of the rabbits at all times. These two ingredients are essential for raising strong, healthy, fast-growing bunnies.

Rabbits being raised for slaughter should attain the four to five pound market weight by eight to ten weeks of age. If rabbits are being raised for fur production, 10 to 20 pellets of Tradition® NutriPreme® may be an optional top-dress over each rabbit's daily ration to improve coat thickness and sheen.

Rabbits being retained for replacement stock should be continued on a free choice basis feeding schedule of SHOW•RITE Premium Rabbit Pellets until they reach maturity. In most breeds, maturity is reached from six to eight months of age. At maturity, the rabbits should be fed according to the "Open Doe" or "Mature Non-breeding Buck" schedule.

## Feeding the Show Rabbit

Following weaning, rabbits being raised for the show ring should be fed SHOW•RITE Premium Rabbit Pellets using 1/2 to 2/3 ounce per one pound of body weight. This amount may be fed over two to three feedings a day. A close watch should be kept on the rabbits' condition. (More or less feed may be needed.) Tradition® NutriPreme® may be an optional top-dress over the ration at the rate of 10 to 20 pellets per rabbit per day. These pellets are high in milk protein and contain a coat conditioner that will help to improve coat thickness and sheen and add the extra "bloom" desired in animals being raised for show. Clean, fresh water should be provided to the rabbits at all times.

If the animal is in good condition and meets all breed characteristics, the other two important factors to consider for success in the show ring are grooming and handling. You must work with the animal to develop its full potential in the show ring.

# Tips for Breeding, Kindling and Finishing

## Breeding

Young does and bucks should not be introduced into the breeding herd until they reach maturity. Breeding rabbits too early may shorten the breeding life of both does and bucks.

Small breeds are usually mated when the bucks and does are between five and six months of age. Medium breeds are usually mated at seven months of age. Giant breeds are usually mated at 9 to 12 months of age.

One buck is needed for each 10 to 20 does. The general condition of the buck should determine the exact number of services per day or per week he can undertake.

The doe should always be taken to the buck's cage for breeding. In most cases, the breeding time is two to three minutes or less. Do not leave the doe unattended in the buck cage for an extended period of time. Does have been known to kill the buck if they are not accepting him.

Gestation time for the normal doe is 31 days. This time may vary a day or two.

A doe may be re-bred shortly before the weaning of her previous litter. The body condition of the doe should be the determining factor. In commercial production, a doe must produce five or more litters containing eight or more offspring per year to be profitable.

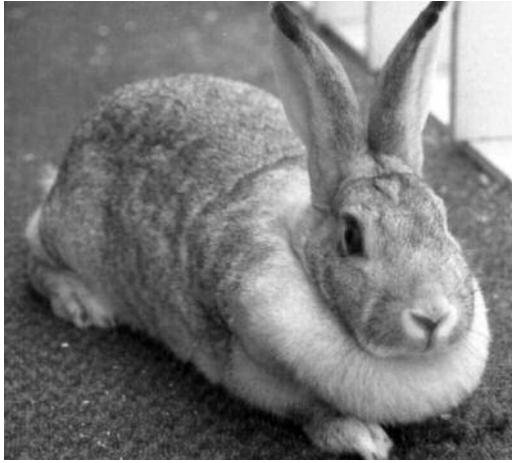
**In any breeding program, it is important to maintain a record on all matings and the offspring from that mating.**

Tattooing the rabbit's ear is one method which can be used, not only to identify the rabbit itself, but also its heritage.

Record keeping is essential to all livestock enterprises. Some of the records necessary for raising rabbits are:

- Tattooing the left ear of all breeding stock ... identifies the rabbit as well as its parents
- A record maintained on each rabbit listing its age, sex, heritage and longevity
- Accurate records on breeding and kindling dates, number of bunnies kindled and survival of bunnies
- Grow-out records on each litter listing growth time, feed efficiency and mortality

# Kindling, Growing and Finishing Rabbits



## Kindling Rabbits

The doe will make her nest one to four days before kindling. A nesting box should be placed inside the doe's cage four to five days prior to the kindling date. This will give the doe time to acquaint herself with the nesting box and prepare her nest in it.

While many different kinds and designs of nesting boxes are available, the main criteria for choosing one is the size. It should be large enough to accommodate the doe and her bunnies. It should also be accessible for easy cleaning and should provide the doe some privacy.

The doe should be left as quiet as possible during this period. The bunnies may be examined on the second or third day following kindling. The young rabbits can be weaned from four to six weeks of age.

## Growing and Finishing Rabbits

After weaning, the young rabbits should be placed in grow-out pens. Never lift rabbits by the ears or legs. Lift young rabbits by grasping the loose skin over the shoulders with one hand and place the other hand under the hind quarters.

If combining litters when rabbits are placed in grow-out pens, it is important to keep them essentially the same size and age in each cage. When the rabbits reach eight to ten weeks of age, they should be separated if they are not being sold for meat.





This booklet is meant only as a general guideline for the proper nutritional care of rabbits. For more information on rabbits and cavies, the following publications are available through the American Rabbit Breeders Association, Inc. (ARBA):

“Official Guideline to Raising Better Rabbits and Cavies”

---

“Domestic Rabbit” magazine

---

The guideline, “Standard of Perfection for Rabbits and Cavies”

---

“Domestic Rabbit Guide”

---

Other invaluable informational publications

---

Also, you can join the American Rabbit Breeders Association:

8 Westport Court, PO Box 426, Bloomington, IL 61704

Visit the ARBA web page at [www.arba.net](http://www.arba.net).

There are also several excellent books available, including, but not limited to:

Rabbit Production. 1987 by Cheeke, Patton, Lukefahr and McNitt. The Interstate Printers, Publishers, Inc., Danville, IL.



**THE MAKING OF A CHAMPION ISN'T EASY.  
THAT IS WHY EVERY BAG OF  
SHOW•RITE PREMIUM RABBIT FEED:**

- Is nutritionally balanced with protein, amino acids, fiber, carbohydrates, vitamins, minerals and much more
- Contains proteinated minerals for better utilization
- Contains probiotics, including yeast and beneficial bacteria
- Contains special enzymes to reduce the effects of hair block
- Contains Mannan Oligosaccharides to help control “bad bacteria” and allows “good bacteria” to grow.

**CHAMPIONS KNOW...  
SHOW•RITE IS THE FEED FOR THEM!**

---

Our experience in feeding millions of rabbits speaks for itself. We know how important quality and consistency are.

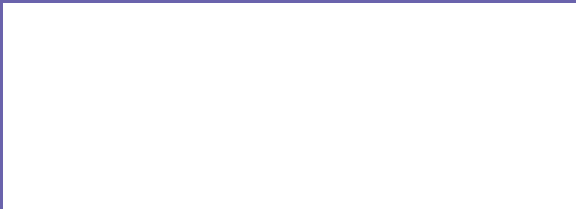
---

We have been, are, and will continue to be dedicated to bringing you and your rabbit the best premium show rabbit feed on the market!



**QUALITY IN EVERY BAG!  
THE NAME SAYS IT ALL!**

SHOW•RITE Premium Rabbit Pellets are available at the following location:



424 North Riverfront Drive • Mankato, MN • [www.hubbardfeeds.com](http://www.hubbardfeeds.com)



W60315 (Rev. 4/10)