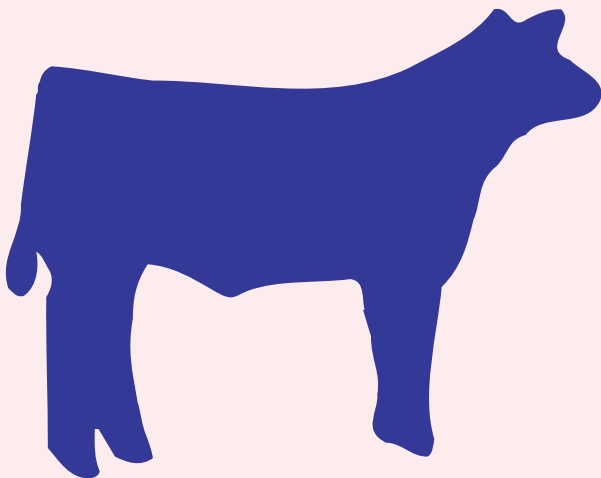


**SHOW·RITE®**

*Show Feeds... Done Rite!*



**Going For The Purple**

*A Look at Getting Your Club Calf Project Ready to Show*



*Products and Answers that WORK®*

424 North Riverfront Drive • Mankato, MN • [www.hubbardfeeds.com](http://www.hubbardfeeds.com)





## Product List

### Show-Rite® Elite Creep Feed Texturized (#335G) or Pelleted (#34PA)

An optimized formulation for the early nutritional needs of the young show calf striving to reach its maximum genetic potential.

### Show-Rite® Cruiser Cattle Grower (#34NP)

A moderate-energy, complete growing feed formulated to achieve frame and muscle growth while maintaining “bloom.” Cruiser can also be used to maintain “bloom” of market cattle once they have achieved the desired level of finish.

### Show-Rite® Accelerator Cattle Developer (#34NQ)

A moderate-energy, complete developing feed formulated to optimize animal growth and development. Accelerator’s energy level is intermediate to Cruiser and Full Throttle making it ideal for developing show bulls, fleshing up show heifers, or transitioning cattle from growing (Cruiser) to finishing (Full Throttle).

### Show-Rite® Full Throttle Cattle Finisher (#34NR)

A high-energy, high-fat complete finishing feed formulated to maximize animal performance and provide the “bloom” and smooth finish needed to “go for the purple.”

### Show-Rite® Basic Beef (#3BKZ)

Fundamentally designed and formulated with cracked grains vs. steam flaked grains to meet the BASIC needs of the show animal during a small segment of the feeding period.

### Show-Rite® Too Cool (#6AG1)

Too Cool is a unique blend of Tasco® and Niasure™ designed to be fed at 2 oz. per head per day to cattle, goats, sheep, and swine in combination with a balanced diet. In a University of Missouri study animals fed a natural feed ingredient harvested from North Atlantic seaweed (Tasco®), had lower core body temperatures than control animals. In a University of Arizona study animals fed an encapsulated niacin source which is 85% rumen stable and 8 times more bioavailable than raw niacin (Niashure™) demonstrated increased sweating rates and decreased core body temperatures.

(Zimelman et. al., JDS Vol 90 (Suppl. 1):231)





## SUCCESS...

Where preparation, dedication and hard work come together!

**Getting your calf project ready** for the fair begins at home the day you get your calf. Many hours of hard work are needed to get your calf in show shape.

**The payoff** for all of this hard work and time is the gratification of being able to present your calf in a well-fitted manner and know that you have done everything to make your calf project look the BEST it can on show day!

**Becoming a good presenter of show cattle** takes a great deal of time and effort on your part. The best way of learning to become a good showman is to observe experienced cattle people and learn from watching them. Always remember that all cattle are different in their structural makeup and they will require different fitting techniques to help make them look their best on show day. There are, however, some basic criteria for getting all cattle ready for show.

**This Management Guide** is intended to help you learn basic fitting and management techniques to help you make your animal look its absolute best on show day.

## Going for the Purple...The Basic Steps

**The first step** in “Going for the Purple” is to teach your animal to lead. This is called “halter breaking”.

- You must start by teaching your calf what the halter is. There are two ways to accomplish this. The first way is to place the halter (with a rope attached) on the calf and allow the calf to drag the halter for a few days. By doing this, the calf will learn what the halter is by stepping on it. Another way to halter break the calf is by tying the calf at a natural position to a pole or wall allowing about 12 inches of halter slack. You should check your calf every 15 to 20 minutes when tying the calf for the first few days to make sure that the calf does not injure itself in any way.
- After a few days, the calf will become accustomed to the halter. This is a good time to teach the calf to lead. Start slowly with your calf and don't jerk the calf around when you are starting the halter breaking process. Leading your calf and talking to him in a calm voice will put your calf more at ease and make the calf unafraid of you and the halter breaking process. When removing the halter from the calf, do it slowly and, once again, use a calm voice when releasing the calf.
- After about a week, when your calf has become accustomed to the halter, start tying the calf with its head up and its feet squarely underneath him. This practice will make for muscle development and teach the calf how to stand when you are in the show ring. Start with about a 15 to 30 minute session, gradually increasing the time over a week's period to a duration of 60 minutes at a time.

**Brushing and touching the calf** and talking to your calf in a soothing voice will calm your calf. Playing a radio in the barn will allow your calf to become accustomed to noise and human voices, further calming the calf.

Start brushing your calf with a rice root brush, as this practice will accustom your calf to the handling it will later receive as you continue to prepare your animal for the show ring. You may need to put your calf in a fitting chute to brush him. This will allow your calf to become accustomed to the fitting chute and train him for later on in the show season.



## Getting Ready For The Show



*Figure 1: Washing and rinsing your calf*

**The most important thing to remember** when halter breaking and taming your calf down, is to do so in a calm manner, never raising your voice or injuring your calf. If you do raise your voice or injure him, he will associate the pain with you and his attitude toward you will be less than desirable. You must continue to build a good relationship with your animal.

**Growing and training hair** is imperative if you expect to make your calf look its best on show day. Hair can and does hide a multitude of faults in the structure of an animal and hair is a very necessary part of a successful project. The best way to grow hair is to brush your calf every chance you get. Keeping your calf in a dark place during the day will decrease the amount of daylight and promote hair growth. Also, keeping calves under fans and misters will lower the temperature of the room which further promotes hair growth.

**Washing and rinsing your calf** everyday is also a very big part of hair growth and stimulation. Show calves shouldn't be washed more than once or twice a week as too much washing will dry out the hair and skin. Make sure that you get all of the soap out of your calf's hair when rinsing. Calves should be rinsed at least once a day and, preferably, twice to promote hair growth and manageability. Calves with dry hair should be sprayed with products such as Rag Oil, Final Touch or Final Bloom. These products should be blown into the hair, prior to washing. Using this practice will increase the "bloom" or "pop" to the hair and help train the hair the way you want it to lay on show day.

## Going for the Purple...The Basic Steps

On rinse days, check your calf's hair condition after blowing it dry and, if needed, use a product such as Revive to keep hair clean and loose. Blow your calf completely dry and then spray on the Revive, working it into the hair until it stands up or lays in the proper manner.



Figure 2: Flat head

**Clipping cattle** is an art that is mastered by few showmen across the country. The key ingredient to a successful clipping job is to know your calf's strong and weak points, taking care to accentuate the strong points and use hair and clipping techniques to hide the weaknesses in your calf. One of the most important factors in a successful clip job is to realize that all animals shouldn't be clipped the same way.

**Experience** is the best teacher when it comes to clipping, and the only way you are going to learn the technique is to practice on your animals long before they go to the fair. Make sure your animal is clean before you start clipping and insure that you have plenty of good light in order to see what you are doing when you start clipping.

Don't try to clip your animal without a blocking chute.

Make sure that you have the right equipment (clippers) before you start. You will need flat heads with a standard 84AU blade for clipping hair tight; sheep heads with a 20 tooth goat comb (P7112) blade for clipping long hair and blending; and a small pair of clippers for final touches and tight clipping. (See Figures 2, 3 and 4.)



Figure 3: Sheep head



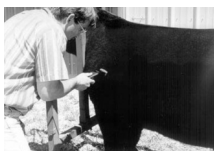
Figure 4: Andis-type small clippers

## Getting Ready For The Show



*Figure 5: Clipping the head*

Approximately three weeks before the show, clip all hair that needs to be shorn close to the body, i.e. head, brisket and neck. This will allow hair to grow back before the fair and it will give your animal a neat appearance. Two to three days before the show, clip your calf's head again, to clean up the head and give a fresh appearance. Try not to make your lines too distinct; you want the calf to look neat and, at the same time, natural. (See Figure 5.)



*Figure 6: Body clipping*

**Body clipping** is a time-consuming art that requires a certain amount of patience and skill. Body clipping will allow you to hide an animal's faults and, at the same time, accentuate the strong points of your calf. You need to know the strong and weak points of your calf before you start body clipping and visualize how you can make your calf look its best on show day. Body

clipping generally takes two sessions, one just prior to leaving for the show and the second on show day. The majority of body clipping should be done at home, with just touch up work done on show day. (See Figure 6.)

## Going for the Purple...The Basic Steps



*Figure 7: Trimming the head*

The following is a discussion on how an animal should be clipped: working from the front to the rear of the animal,



*Figure 8:  
Trimming the neck*

### Head and neck

Trim closely to the skin, two to three weeks prior to the show using flat head clippers with standard 84AU blades going against the grain of the hair on the nose and forehead.

(See Figure 7.)

Clip down on the cheek and jaw and blend the hair in with the nose and forehead. Leave approximately one inch of hair on the poll, blended to a peak. Two to three days before the show clip the face again to give a fresh appearance. Clip up on the brisket and neck to give a clean and neat appearance. This will

make your calf look longer and more extended in the neck.  
(See Figure 8.)

Shear down on the neck with your flat heads approximately 3 weeks prior to the show to allow for hair re-growth. Trim at a 45 degree angle from the top of the shoulder to the lower base of the shoulder. Blend in hair to make for a smooth junction between the neck and shoulder.

## Getting Ready For The Show



*Figure 9: Clipping the shoulder*

### Shoulder

The hair on the top of the shoulder is to be body clipped with a sheep head and blown forward to blend the shoulder in naturally, making for a smooth look to the shoulder. (See Figure 9 above.)



*Figure 10: The loin area and rear quarter*

### Loin area and rear quarter

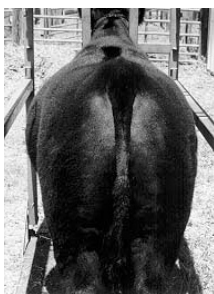
The entire loin area and back should be trimmed flat on top with hair left on the loin edge, making your calf look thicker and wider topped. Start with sheep heads and work at making your calf look as thick topped as possible, going outward toward the edge of the loin and then blending this in with the side hair to add dimension and width to the top. Work your way back toward the hip; make your animal appear as square hipped as possible. This is accomplished by leaving hair longer in areas where the calf tends to drop off from hooks to pins. (See Figure 10.)

## Going for the Purple...The Basic Steps



*Figure 11: The loin area and rear quarter*

**Hip hair** is very important in giving the animal an appearance of being “square-rumped”. The area closest to the top of the tail is trimmed closely and in an outward motion, leaving most of the hair on the hindquarter edge. This adds dimension and thickness to the hindquarters. Leave as much hair as possible on the rear quarter of your calf to add thickness in the rump area.



*Figure 12:  
Rear quarter*

(See Figure 11.)

Hair should be pulled up and out to add dimension to the rear quarter, leaving hair longer on the lower quarter to express stifle muscle development. (See Figure 12.)

By leaving the hair longer in this area, you will reduce the prominence of the hock also. Hair in the twist can be shaped to give the desired effect of more muscle development. Hair should be blended in on the belly to give a straight and deeper appearance. Leave hair long and blend to give a “boxy” appearance in the flank and rear belly area. This will make your calf look deeper bodied and have more capacity. On steers, tightly trim around the sheath, but blend in so that your calf does not look dirty sheathed.



## Getting Ready For The Show



*Figure 13: Hock*

### Rear leg

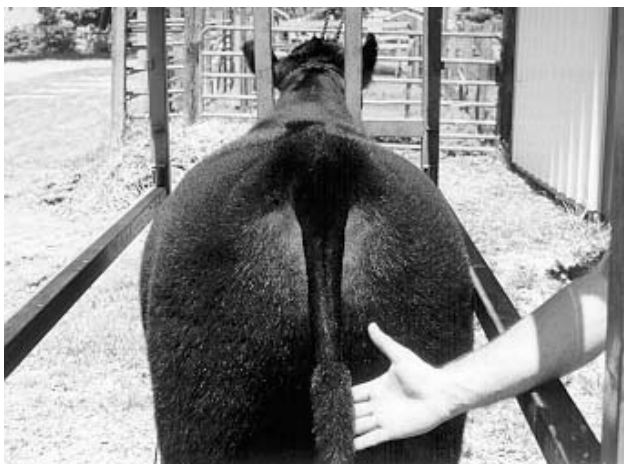
The first thing you should clip on the rear leg is the hock area. Tightly trim the area directly above and in front of the hock to make your calf look straighter legged. This is very important in making your calf look structurally correct. (Some discussion has been made in the show ring recently about how straight legged our cattle are, so do not make the cattle look post-legged.) Once you have tightly trimmed the area in front of the hock, the outside area of the hock should be shaved down almost to the skin, in approximately a 3 inch area, to make the hock look tighter and smaller. Use some light adhesive and split the leg hair, about 7/8 of the hair going to the front of the calf and 1/8 going to the rear. This should be done on the inside and outside of the leg to make the leg look straighter and more eye appealing. Much of this can be accomplished when you rinse your calves and train the hair, prior to clipping your calf.



*Figure 14: Leg*

Trim the longer hairs off of the rear leg and leave hair longer where they need to provide a straighter appearance. (See Figures 13 and 14.)

## Going for the Purple...The Basic Steps

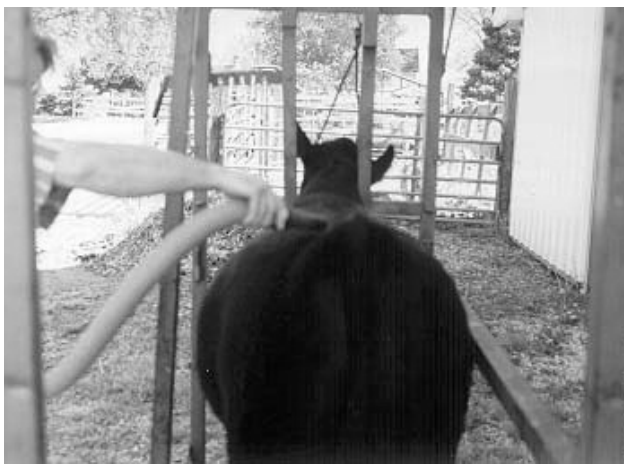


*Figure 15: Tail head and tail*

### Tail head and tail

Extend the hair in the tail head area in order to make the calf look square and longer hipped. Take your time on the tail head and make sure your animal looks as square as possible. Use adhesive to get the tail head hair to stand in the desired manner and clip from the growth bone (rump) back to the hip in straight level motions toward the back of the hip. When clipping the tail, bob or trim the lower tail to give a natural look. The tail from the tail head down to the switch should be shaved closely to a short “v”, as this will make the animal look wider through the pins. Trim the rump hair tightly on the back of the hip and go outward to gain the maximum rump width possible. Blend the hair outward toward the outside of the hip and brush, blow or comb the hair out and up to give the best (most) possible dimension to the rear quarters. (Refer to Figure 15.)

## Getting Ready For The Show



*Figure 16: Using a blower to make the hair “pop”*

**Traveling to the show with your calf** should be as stress free as possible. Your calf should probably not be fed for 6 to 12 hours before loading as you want your calf to eat when he gets to the show. When you get to the show, only feed one half to two thirds of a feeding to keep your calf hungry and on feed. Allow your calf to only drink one half of the normal water volume 6 to 12 hours prior to loading, as you will want your calf to drink when he gets to the show. By using this restricting process prior to the show, you will get your calf fuller on show day.

**Keep your calf as cool as possible** with fans and water at the show. Prior to fitting on show day, your calf should be washed, blown dry and fed before 6:30 in the morning. The goal is to keep your calf as clean as possible prior to the show so that the hair will “pop” when the time comes for it to pop. Every time the calf stands up, use your blower and blow the hair in the correct way. If possible you may want to spray on a light coat of Revive and blow it in until the hair pops or gains more volume. Be careful not to use Revive on the legs, as it will hinder the effectiveness of the adhesive that you will use on the legs on show day. (Refer to Figure 16.)

## It's Show Time! Preparing Your Calf on Show Day

**Allow 45 minutes to an hour to get your calf ready** for the show on show day. Make sure your fitting chute is clean prior to putting your animal in the chute.

**When you get your animal in the chute,** use your blower and blow the animal out completely prior to starting to fit him. Use products such as Revive, Show Foam, Base Coat, Zoom Bloom, Show Sheen or Rag Oil to set the hair. The more you blow on the hair, the more volume it will get. Do not apply these products to the legs because the adhesive will not work to its full effectiveness.

### **Placement of nylon halter and show halter...**

Put your calf in the head gate of your fitting chute and place the show halter on the calf. Put the nylon halter over your show halter and lead your calf to the ring with the nylon halter. When you get ready to enter the ring pull the body hair up one last time, take the nylon halter off and make sure you have a coarse toothed scotch comb (with the teeth) handy.

**Fit one rear leg at a time** and divide the leg hair by  $\frac{7}{8}$  to  $\frac{1}{8}$ . The leg hair should be pulled forward from  $\frac{7}{8}$  of the leg forward and up and the back part of the leg hair should be pulled backwards. Use E-Z Comb Adhesive or 77 Adhesive to get the desired effect, taking care to not apply too much glue. Use a coarse toothed scotch comb to move the leg hair around the way it should be. Make sure you don't pull the leg hair up too high on the hindquarter. The leg and the hindquarter must blend in as smooth as possible. Once you get the leg hair set on the rear legs, use sheep heads with 7112 blades to clip evenly and make the leg look as straight and correct as possible.



## Going For The Purple



*Figure 17: Blow the hair to add volume and body*

**Go to the front legs** and pull the hair forward and up using E-Z Comb Adhesive. You should “bone” the inside and outside of the front and rear legs. Allow the glue to dry, then begin clipping the hair. Once the hair has been clipped to the desired length, dust the leg with a light coating of 77 Adhesive or Tail Adhesive. When the glue is dry, spray paint the hair and the hooves with non-oil based paint. If the rules state that your show is a “no paint show”, make sure that you don’t get any paint above the legs in order to avoid disqualification.

**Keep blowing on the hair** with your blower to add volume and body to the hair. Oil the face, brisket, and neck area with Final Touch, Final Bloom, Final Mist or Purple Oil to make your calf look fresh. (Refer to Figure 17.)

**MAKE SURE THAT YOUR CALF AND YOU ARE AS NEAT AS POSSIBLE AND, ABOVE ALL, HAVE FUN SHOWING YOUR CALF!**

### Removing show products from your calf after the show

Several products are available to remove show products from your calf after the show, including: Hocus-Pocus, Unfit or a combination of alcohol and Purple Oil. Wash your calf, blow him out and replace the oils lost in the fitting process with Revive, Show Bloom or the product of your choice. Healthy hair is hard to keep and only hard work and diligence on your part will keep your calf’s hair in proper condition.



### Everyday Supplies

SHOW•RITE® Show Feeds

Feed pans

Water buckets

Fans

Blower

Extra halters

Neck ropes

Blocking chute

Spray bottle

Fogging bottle

Rice root brush

Scotch combs

Hammer, nails, pliers, wire

Bedding fork (apple picker)

Shovel

Manure fork

Revive, Rag Oil, Show Sheen

Rubber mat for calf

Clipper lube

Flat heads

Small Andis-like clippers

Sheep heads

Extra blades for all clippers

### Show Day Supplies

Adhesive-77, E-Z Comb

Final Touch, Final Mist

Paint

Scissors

Hocus Pocus, Unfit

Show Foam

Revive

### Ringside Supplies

Show Halter

Clean scotch comb

Showman harness

Show stick

Final Touch, Final Mist

Quality in  
every bag!

The name  
says it all!

